



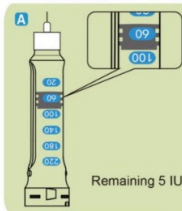
1. The pen is Lilly 3mL Insulin Cartridge.
2. This manual include Instruction manual, storage, wash and Troubleshooting
3. Needle threaded fittings meet TS EN ISO 11608-2: 2012 standard.
4. The pen is only suitable for 3mL Cartridge. So that ensure the safety and effectiveness of this pen, you need to consult the specific use to pharmaceutical manufacturers.

Pen injectors

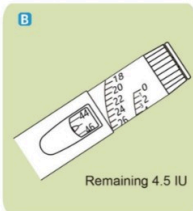


5. Before you use this pen, you need to consult the doctor or nurse.
6. This product is mainly composed of dose knob, body, release button, lead screw, cartridge holder, cap. It not include drugs and needles, all components are not in contact with the liquid. Please consult your doctor or nurse to select the appropriate disposable needles.

Processing when refill is run out



Remaining 5 IU

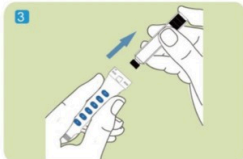
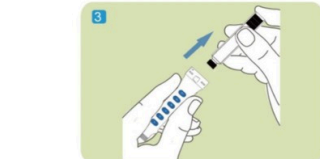
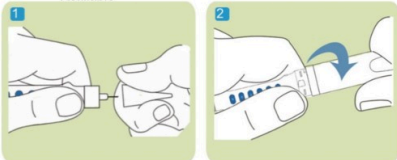


Remaining 4.5 IU

①As Shown A. The dose shows on the Refill Frame is the remaining dose. This value is estimated only.

②If the remaining dose is less than you need. The method to know the accurate dose: Rotating the injection button to the desired dose, press the button till you can not press forward any. You need use the set value minus the value that displayed on window. The result is the dose that you inject actually. (As Shown B. If the dose shown between two tick marks, please read the lower scale.)

Refillable



①Unscrew the needle, unscrew the cartridge holder, remove the used cartridge empty, Then follow the installation steps, load a new cartridge.

Troubleshooting

You may encounter the following issues then using our pen, the following are answers to these questions :

- ①When you are ready to inject and you can not see liquid appears at the top, how to do?
Answer: Make sure the cartridge holder and pusher has been tightened. Confirm tighten, follow these steps to prepare before the injection until the first drop of liquid appears on the tip up.
- ②When you are ready to inject and you can not see liquid appears at the top, and the press button does not go, how to do?
Answer: ①The needle may be clogged, replace the needle, then follow the steps to operate till you see the first drops of liquid. ②Check the liquid is run out, then follow the refillable steps to operate.
- ③Injection push button is stuck, how to do?
Answer: ①Check that the cartridge has been used up, replaced with a new cartridge. ②If you have not yet run out of refills, push the button from side to side then pull out, you can adjust the dose.
- ④When refillable can not put the screw into propeller?
Answer: The propeller may be jammed, please gently twist the screw to the side and pulled out. Then rotating or screw until the screw completely into the propeller.
- ⑤The dose is set incorrectly, the how to do?
Answer: Turn the button till you see the dose that you want to inject.
- ⑥You can not set the dose that you need to inject, how to do?
Answer: ① Maybe the dose you set is larger than 0.6ml. If it is larger than 0.6ml, Please injections twice. ② The dose you set may exceed the remaining dose, Please read the dose when the dose is run out. and replace a new cartridge injection again. The total dose of twice is the dose that you want.

Precautions



1. The pen need care use, beware of falling, avoid hitting hard objects.
2. When using the pen, pay attention to dust and clean.
3. Make sure the screw has been fully restored to propeller. (See the installation procedure)
4. Make the propeller and the cartridge holder linked loosely.
5. Before each injection, to ensure that there is liquid appears at the tip. (See injection preparation)
6. After each injection, you should immediately remove the needle. Otherwise, the temperature may cause leakage, may exist other potential risks.
7. Do not use iodine, fluorine-containing detergents to clean the pen injector, otherwise it will damage the plastic portion of the syringe.
8. Pen use valid for 3000 times or 3 years, whichever occurs first.
9. In an emergency, you can use a disposable syringe to inject drug.
10. Please never put the lubricants on the pen.
11. The pen is only for one person.
12. Make sure the pen is put in the box, and away from pollution.
13. With a cotton ball dipped detergent and wipe the pen, never put the pen in water.
14. When the pen is malfunction, you can not fix it by yourself.
15. You can replace a cartridge when the cartridge is run out.
16. Push the injection button down quickly may make the button harder to push. pushing the button more slowly may make it easier.
17. Using a larger diameter needle will make easier to push the injection button during injection, ask your healthcare provider which needle is best for you.
18. Put the product in the box when you finish using the product.

Please contact the following if you meet some problems



Pen injectors



Getting ready

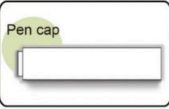
Wash your hands and make sure you have the following items before beginning

Wash your hands and prepare for it:

1. The pen is Lilly 3ml Insulin Cartridge.
2. Needle threaded fittings meet TS EN ISO 11608—2: 2012 standard.
3. Alcohol cotton.

4. The first time you use insulin pen, please read the manual carefully. Even if you've used other pen, you still need to read these instructions.
5. Before you use this pen, you need to consult the doctor or nurse.
6. This manual include Instruction manual, storage, wash and Troubleshooting.

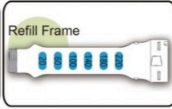
The main component of the pen is pen cap, cartridge, Cartridge holder, propeller. Constitute



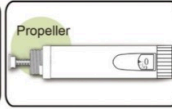
Pen cap



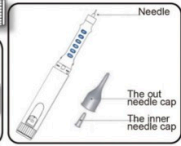
Cartridge



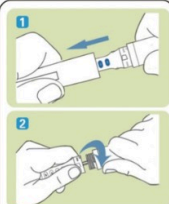
Refill Frame



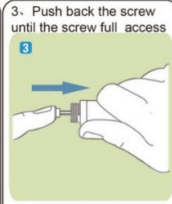
Propeller



Installation

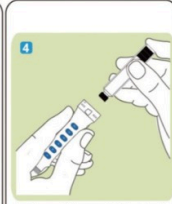


- 1** Get the pen from the box, unplug the cap.
- 2** Unscrew the cap cartridge holder.



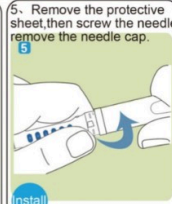
- 3** Push back the screw until the screw full access

Note:
If you push the injection button without a cartridge holder the screw will not move.



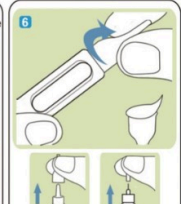
- 4** Insert the cartridge into the Refill Frame put the small end of the cartridge into the cartridge holder.

Note:
Please make sure the cartridge is not broken before you install the cartridge.



- 5** Remove the protective sheet, then screw the needle remove the needle cap.

install
Note:
The cartridge may not be installed in place, the screw may not move forward, you can not inject the dose you need. Wipe the small rubber seal on the end of the cartridge with an alcohol swab.



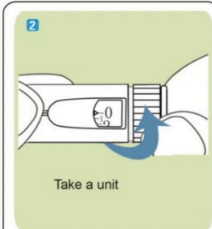
- 6** Remove the protective sheet, then screw the needle, remove the needle cap and make sure the needle is not bend or damaged.

Injection preparation



1 Injection preparation

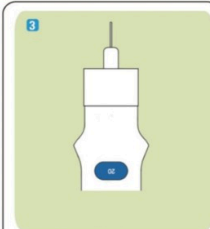
- 1** Before each injection, required to install a new needle.



2

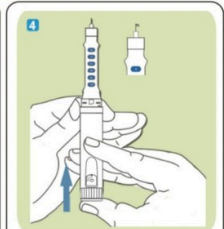
Take a unit

- 2** Rotating injection button, collect a dose that you want to inject.



3

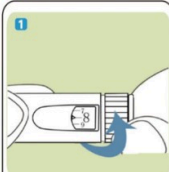
- 3** Put the pen vertical and the pen needle upward.



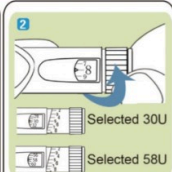
4

- 4** Press the injection button till you see liquid hanging on the tip.

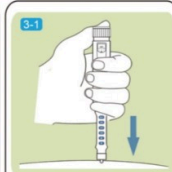
Dose selection Injection



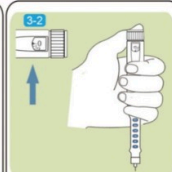
- 1** Rotating injection button till the dose that you need.



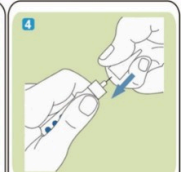
- 2** If you accidentally overdose you can reverse the injection button, till the correct dose. The maximum dose is 0.6ml, if your dose is larger than 0.6ml, you should be injected twice.



- 3-1** At the end of an injection, the number in the window should be "0", if it is not, this is amount of insulin you did not receive. Remember this number, remove the needle and the empty cartridge. It is possible to set a dose larger than the amount of insulin left in the cartridge.



- 3-2** 1. Piercing the Needle into body until you can not press any more. The injection button should be pressed fully. At this time, measurement indicating "0" make sure the dose has been injected into body accurately. After injection, do not immediately pull out the needle, the needle should remain under the skin for at least 10 seconds. Before removing the needle, please do not release the button.



- 4** 2. Pull out the needle, the dose you set have been injected.
3. End of the injection, take the outer needle cap, unscrew the needle, tighten the cap.
Please be careful of the needle to avoid accidental stabbing.

Contact Information